

Infant Mortality Metro Denver Snapshot

Adam Anderson MURP, MPH

Vicki Swarr MSN

May 15, 2016



Infant Mortality

- **African American infants** are **3-4 times** more likely to die in the first year- >11% in 2015
- **African American mothers** are also **3 times** more likely to experience preterm delivery - >10.9% PTB rate in 2015. **This is 28% higher than the rate for all other women.**



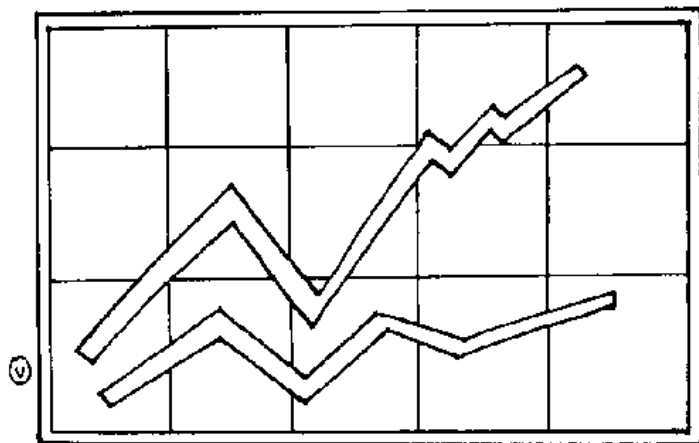
Data Definitions

- **Infant**—up to 1 year of age
- **Fetal death**—Death prior to completion of pregnancy
- **Neonatal**—birth up to the 28th day of life
- **Post-neonatal**—28 days of life up to 1 year
- **Low birth weight**—Birth weight of less than 2,500 grams (less than 5 lb 8 oz)
- **Very low birth weight**—Birth weight of less than 1,500 grams (less than 3 lb 5 oz)



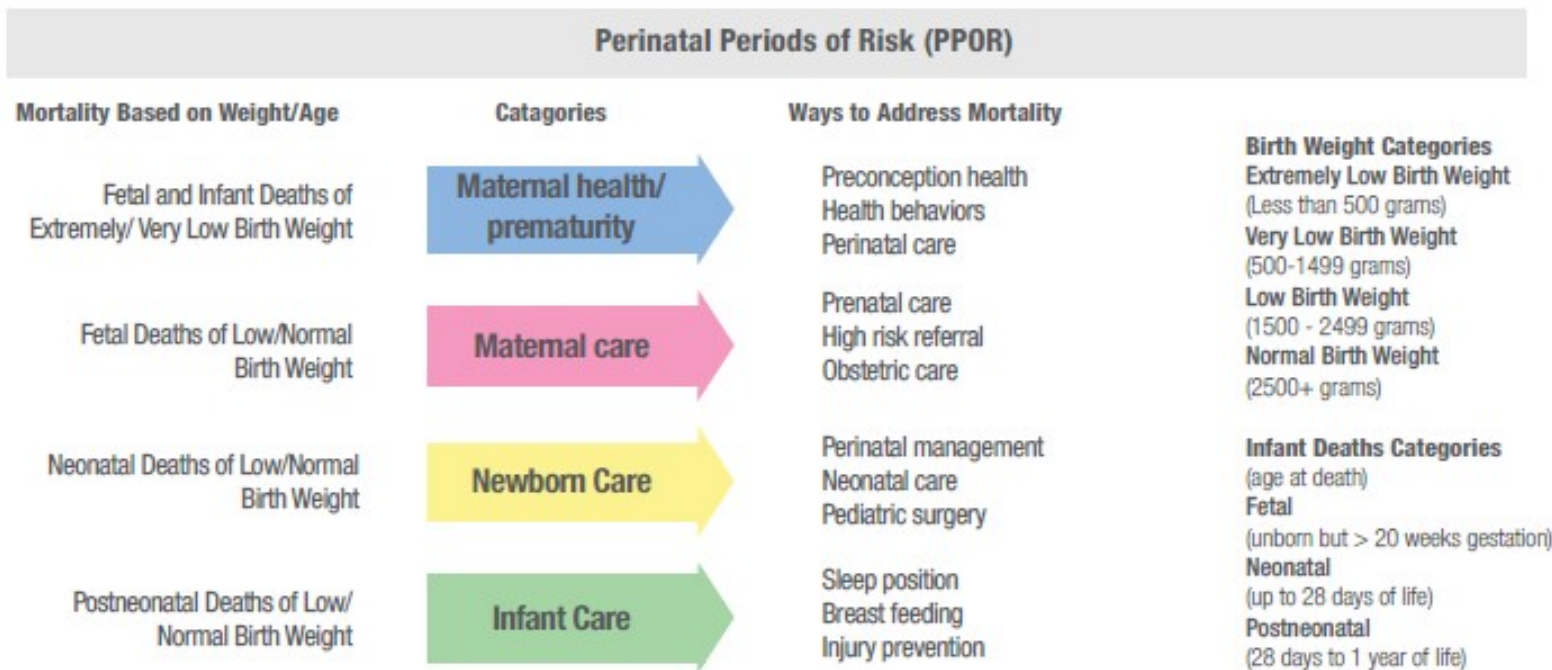
Data Definitions

- **Infant mortality rate**—Number of infant deaths/number of live births x 100,000
- **Fetal-infant mortality rate**—(Number of fetal deaths + infant deaths)/ (number of fetal deaths + live births) x 100,000



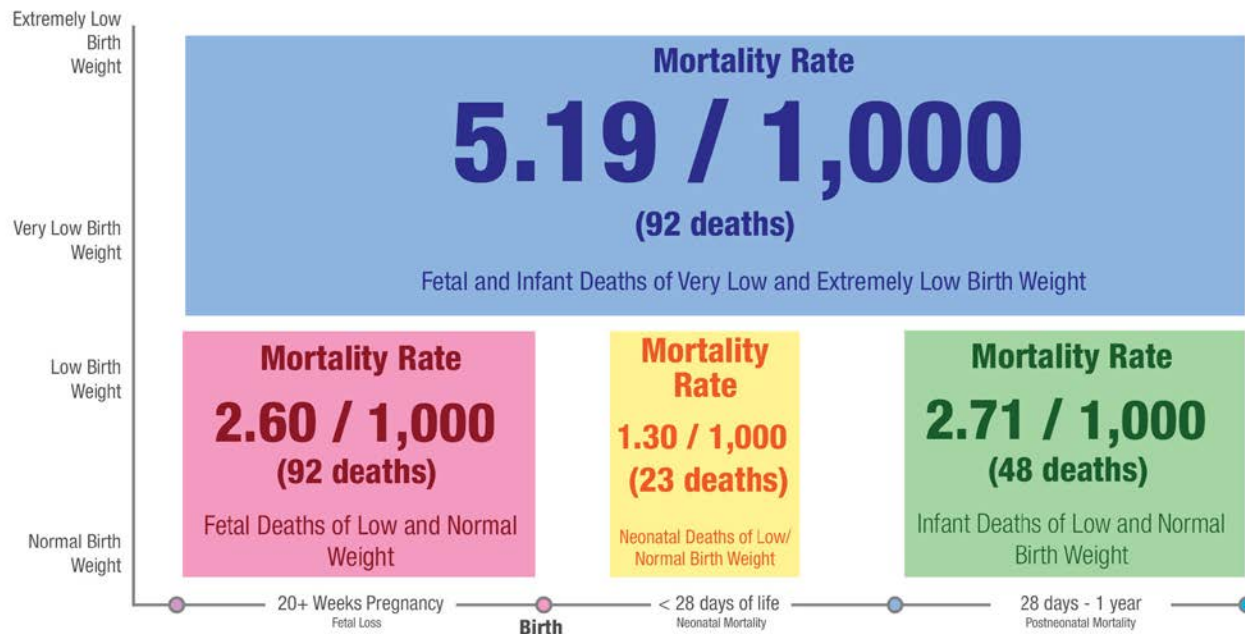
Available Data

- PPOR –Perinatal Periods of Risk
- Data Mapping

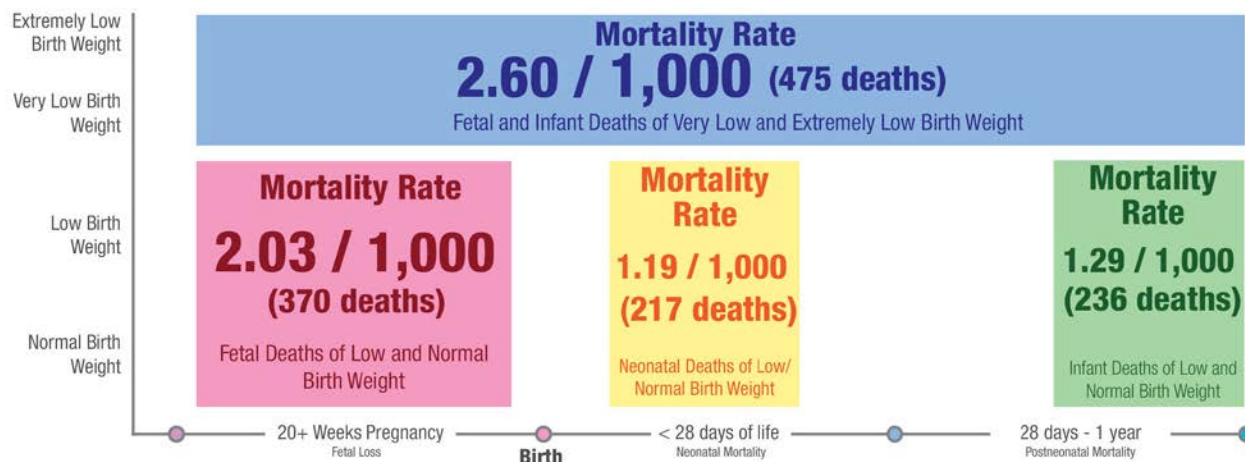


Data Review

Fetal and Infant Mortality (PPOR) for Black (Non-Hispanic)

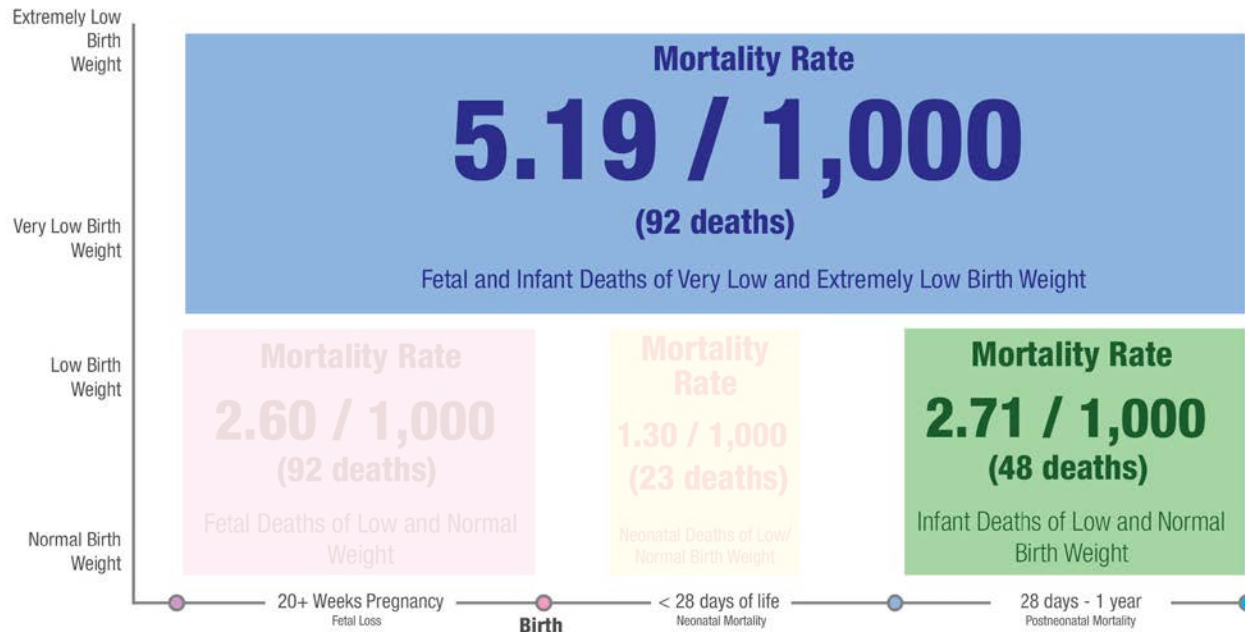


Fetal and Infant Mortality (PPOR) for Non-Black

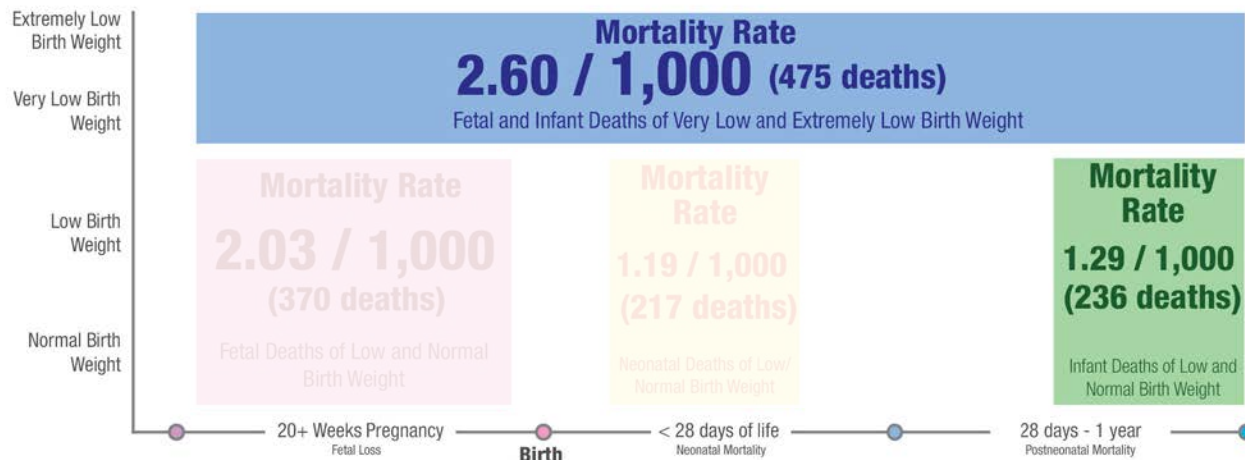


Data Review

Fetal and Infant Mortality (PPOR) for Black (Non-Hispanic)

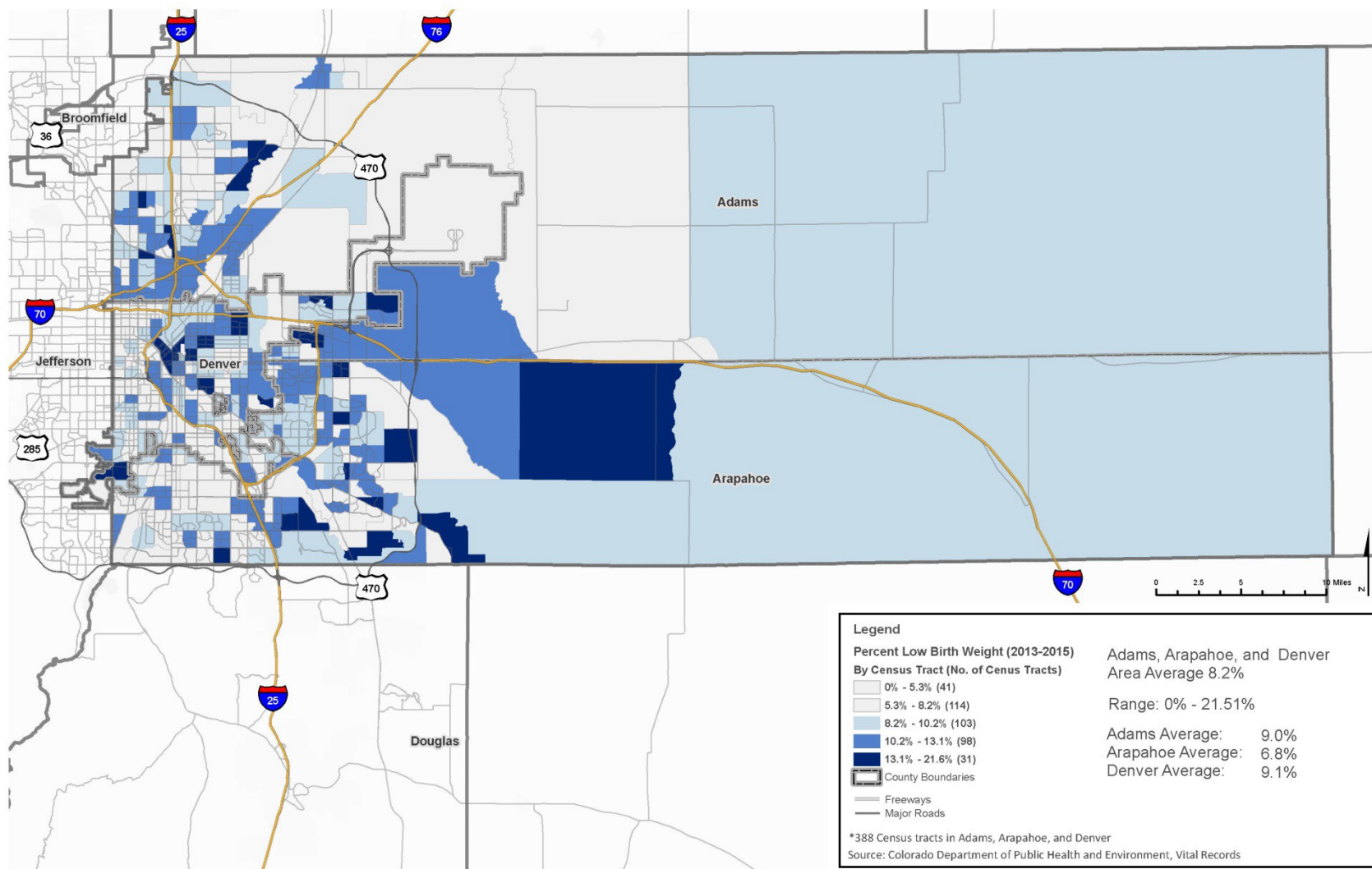


Fetal and Infant Mortality (PPOR) for Non-Black



Percent of Singleton Births that are Low Birth Weight (<2500 grams) (2013-2015):

Adams, Arapahoe, and Denver Counties, Colorado

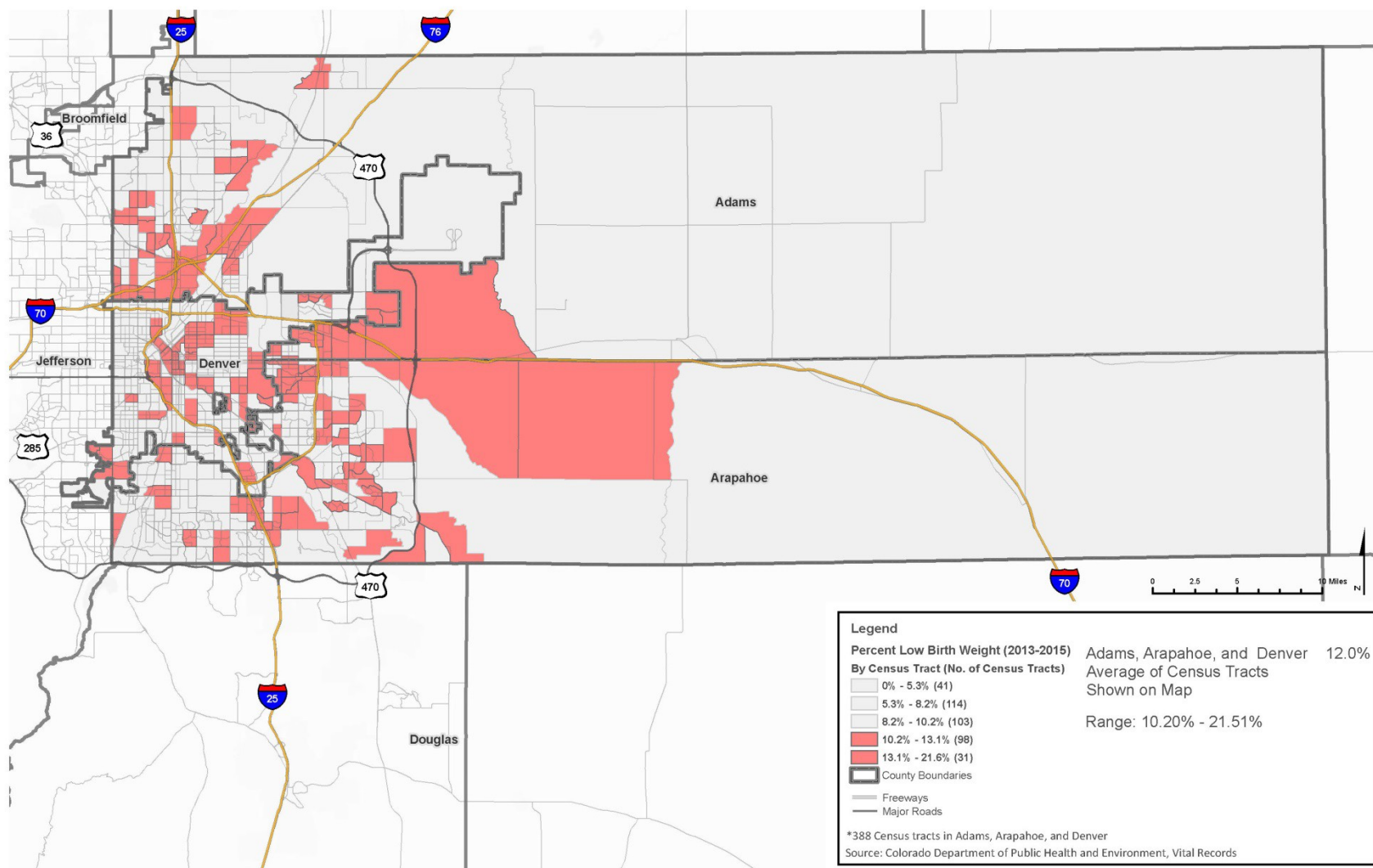


Census Tract Boundary Data: US Census 2010

Date: November, 2016

Created by Tri-County Health Department | Epidemiology, Planning, and Communications Division

Census Tracts with the Greatest Percent of Singleton Births that are Low Birth Weight (<2500 grams) (2013-2015): Adams, Arapahoe, and Denver Counties, Colorado

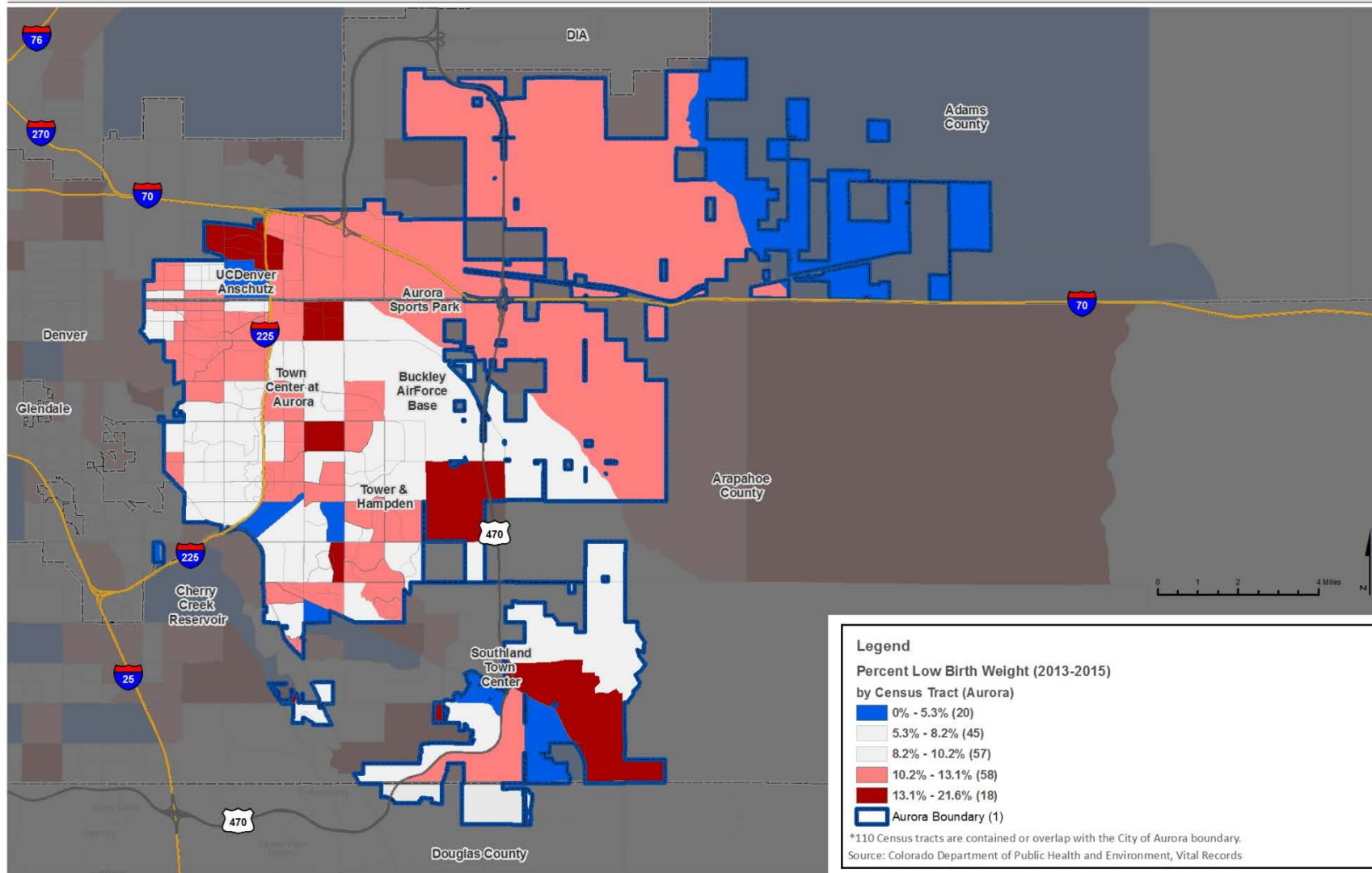


Census Tract Boundary Data: US Census 2010

Date: November, 2016

Created by Tri-County Health Department | Epidemiology, Planning, and Communications Division

Census Tracts with the Highest Percent of Low Birth Weight <2500 grams> (2013-2015) of Singleton Births: Aurora, Colorado



Legend

Percent Low Birth Weight (2013-2015)

by Census Tract (Aurora)

- 0% - 5.3% (20)
- 5.3% - 8.2% (45)
- 8.2% - 10.2% (57)
- 10.2% - 13.1% (58)
- 13.1% - 21.6% (18)
- Aurora Boundary (1)

*110 Census tracts are contained or overlap with the City of Aurora boundary.

Source: Colorado Department of Public Health and Environment, Vital Records

Census Tract Boundary Data: US Census 2010

Date: November, 2016

Created by Tri-County Health Department | Epidemiology, Planning, and Communications Division

Majority of black infant mortality disparity falls under the **Maternal Health/Prematurity** and **Infant Care** categories. **Maternal Health/Prematurity** is due to a higher proportion of very low birth weight births.²

Mortality Based on Weight/Age

Categories

Fetal and Infant Deaths of Extremely/ Very Low Birth Weight

**Maternal Health/
Prematurity**

Fetal Deaths of Low/Normal Birth Weight

Maternal Care

Neonatal Deaths of Low/Normal Birth Weight

Newborn Care

Postneonatal Deaths of Low/ Normal Birth Weight

Infant Care

Maternal health/ prematurity

Prevention areas with the highest potential impact for low birth weight reduction include promoting health prior to pregnancy, promoting sufficient weight gain, and getting women into prenatal care earlier.

Infant Care

Prevention areas with the highest potential impact during the Infant Care period include educations around safe sleep practices, unintentional injury prevention, and disease/infection

2. Aiona, K. (2014). Perinatal Periods of Risk (PPOR) Analysis in Denver (Rep.). Denver, CO.

Call to Action

- **Community Action Network:** Contact Nathifa Miller
nathifa@familiesforwardrc.org
- **Families Forward Resource Center:** <http://www.familiesforwardrc.org/>
- **More Black Birthdays:** <http://www.moreblackbirthdays.org/>
- **Healthier Beginnings Inc:** <http://www.healthierbeginning.org/>



Empowerment

Respect

COMMUNITY

Women's Health

Parenting

Self-Confidence

Infant Resources

FAMILY

Child Development

FATHERHOOD SUPPORT

Pregnancy Support

HEALTHY BABIES, STRONG FAMILIES

Healthy Start

303-386-2915

“Partnering
to Ensure
African
American
Families Are
Healthy And
Thriving”



Resources

- **March of Dimes** <http://www.marchofdimes.org/>
- **Colorado Department of Public Health**
https://www.colorado.gov/pacific/sites/default/files/LPH_MCH_Issue-Brief-2_Infant-Mortality.pdf and
https://www.colorado.gov/pacific/sites/default/files/PF_Preterm-BirthRecs.pdf
- **Zero to Three: Policy and Advocacy**
<https://www.zerotothree.org/policy-and-advocacy>



Documentaries

- **Precious Loss:**

https://www.youtube.com/watch?v=En7f8_bUhlM

- **Unnatural Causes:**

<http://www.pbs.org/unnaturalcauses/>



Contact Information

Adam Anderson MURP, MPH
Tri-County Health Department
aanderson@tchd.org

Nathifa Miller JD
Collective Impact Coordinator
nathifa@familiesforwardrc.org

Vicki Swarr MSN
Tri-County Health Department
vswarr@tchd.org

