

Welcome!




AURORA HEALTH ALLIANCE
Behavioral Health during COVID-19

Vulnerable Populations Lunchtime Series
2: Seniors & Older Adults

Sponsored by

Caring for you and your health
SIGNAL
Behavioral Health Network

AHA Behavioral Health: Vulnerable Populations Lunchtime Series



Session 3

Substance Misuse

Wednesday, May 13, 2020

12:00 - 12:45 pm

Session 4

TBD

Wednesday, May 13, 2020

12:00 - 12:45 pm

We will be requesting feedback from the community on what vulnerable population and topics they would like to hear about for our final session.

Behavioral Health: Seniors & COVID-19 Panel

Catherine Baines, LMFT
HealthOne Crisis Assessment Team

Evan Plys, PhD
Post-Doctoral Fellow, Palliative Care & Aging
University of Colorado Denver

Rebecca Kase, LCSW, RYT
Heart-Centered Counseling

Behavioral Health: Seniors & COVID-19 Panel

Catherine Baines, LMFT
HealthOne Crisis Assessment Team

INCREASING ACCESS!

BUILDING COLLABORATION!

EXPANDING COVERAGE!



Behavioral Health: Seniors & COVID-19 Panel

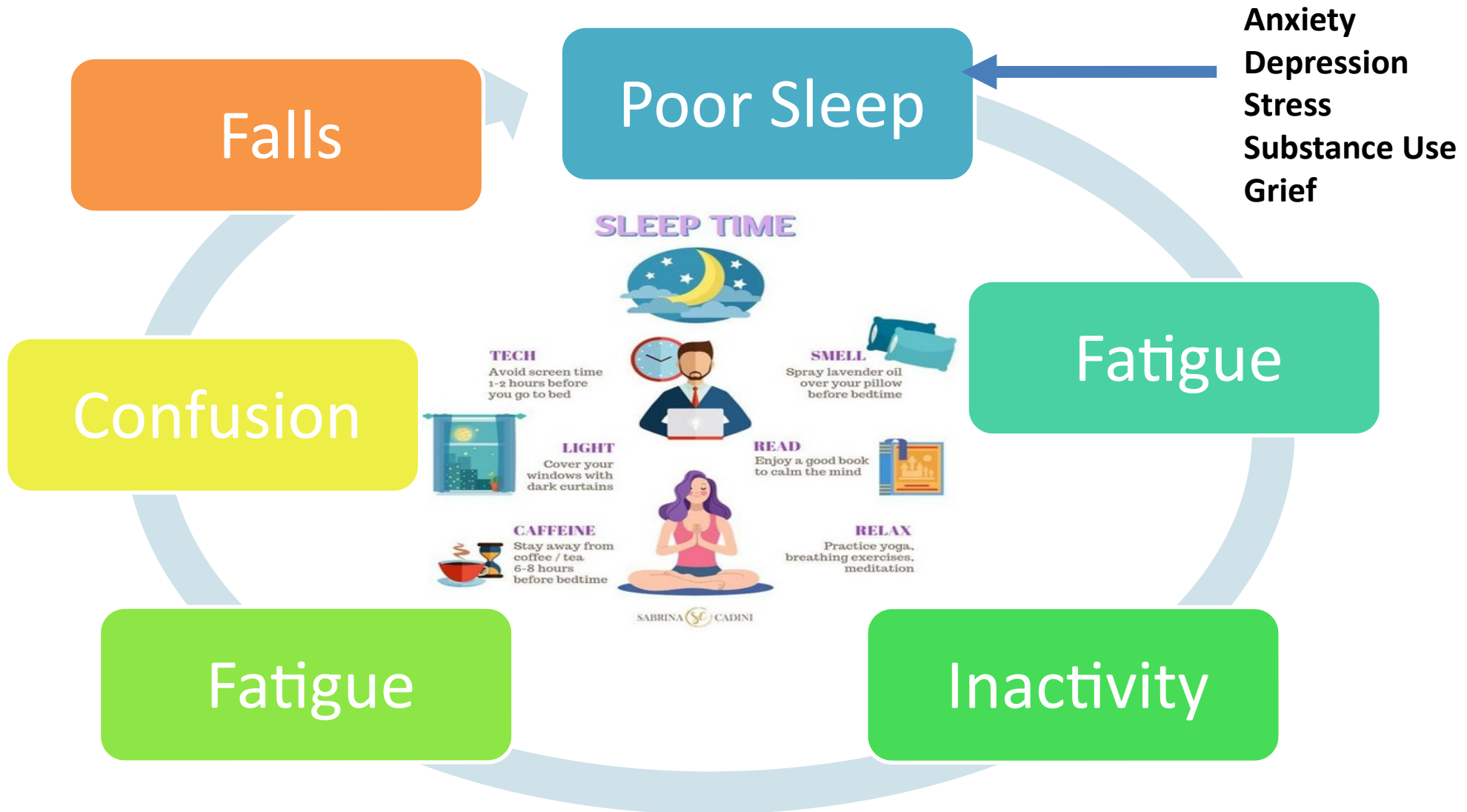
Evan Plys, PhD

**Post-Doctoral Fellow, Palliative Care & Aging
University of Colorado Denver**

Distress - Resilience



- **Strengths-Based Strategies**
- **Reminiscence & Life Review**
- **Meaning-Making**



Ageism

DJ says elderly people should sacrifice themselves to coronavirus to save the economy

[View 5 comments](#)



Jimmy McCloskey Wednesday 25 Mar 2020 1:22 pm



6k
SHARES

Texas' lieutenant governor suggests grandparents are willing to die for US economy

Adrianna Rodriguez USA TODAY

Published 9:14 a.m. ET Mar. 24, 2020 | Updated 11:50 a.m. ET Mar. 24, 2020

TABLE. Hospitalization, intensive care unit (ICU) admission, and case-fatality percentages for reported COVID-19 cases, by age group — United States, February 12–March 16, 2020

Age group (yrs) (no. of cases)	%		
	Hospitalization	ICU admission	Case-fatality
0–19 (123)	1.6–2.5	0	0
20–44 (705)	14.3–20.8	2.0–4.2	0.1–0.2
45–54 (429)	21.2–28.3	5.4–10.4	0.5–0.8
55–64 (429)	20.5–30.1	4.7–11.2	1.4–2.6
65–74 (409)	28.6–43.5	8.1–18.8	2.7–4.9
75–84 (210)	30.5–58.7	10.5–31.0	4.3–10.5
≥85 (144)	31.3–70.3	6.3–29.0	10.4–27.3
Total (2,449)	20.7–31.4	4.9–11.5	1.8–3.4



corona virus



boomer remover

How NOT to Wear a Mask



Behavioral Health: Seniors & COVID-19 Panel

Rebecca Kase, LCSW, RYT
Heart-Centered Counseling

Questions?

Please submit questions, using the chat function.

Next Event:

Wednesday, May 13, 2020 12pm

Please register for this event on our website,
www.aurorahealthalliance.org/aha-behavioral-health/

Thanks for joining us!

